

APOLLO3 AMA3B1KK-KBR EVB

REVISION HISTORY

REV 1.0.0 ("REV. A")

-- Initial Release

REV 1.1.0 ("REV. B")

-- Updated selection method between 1.8V and 3.3V on-board supplies
-- Fixed VDDIO supply issues on J-Link OB MCU
-- Support for LED operation to 1.8V

REV 1.2.0 ("REV. C")

-- Update MCU from Apollo2 to Apollo3
-- Update reference designator of R27~R29,C37~C44
-- Added R1,R2

REV 1.3.0 ("REV. D")

-- Updated net label of GP0~GP49

REV 1.4.0 ("REV. E")

-- Added capacitor C45=47nF between H3 and GND
-- Added loading capacitors C46,C47 on XI&XO pin
-- Added R30=0 ohm series resistor between C40 and J5
-- R1,R3 be pulled up to VDD_MCU_TRACK

REV 1.5.0 ("REV. F")

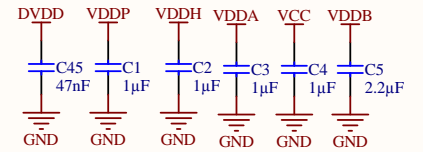
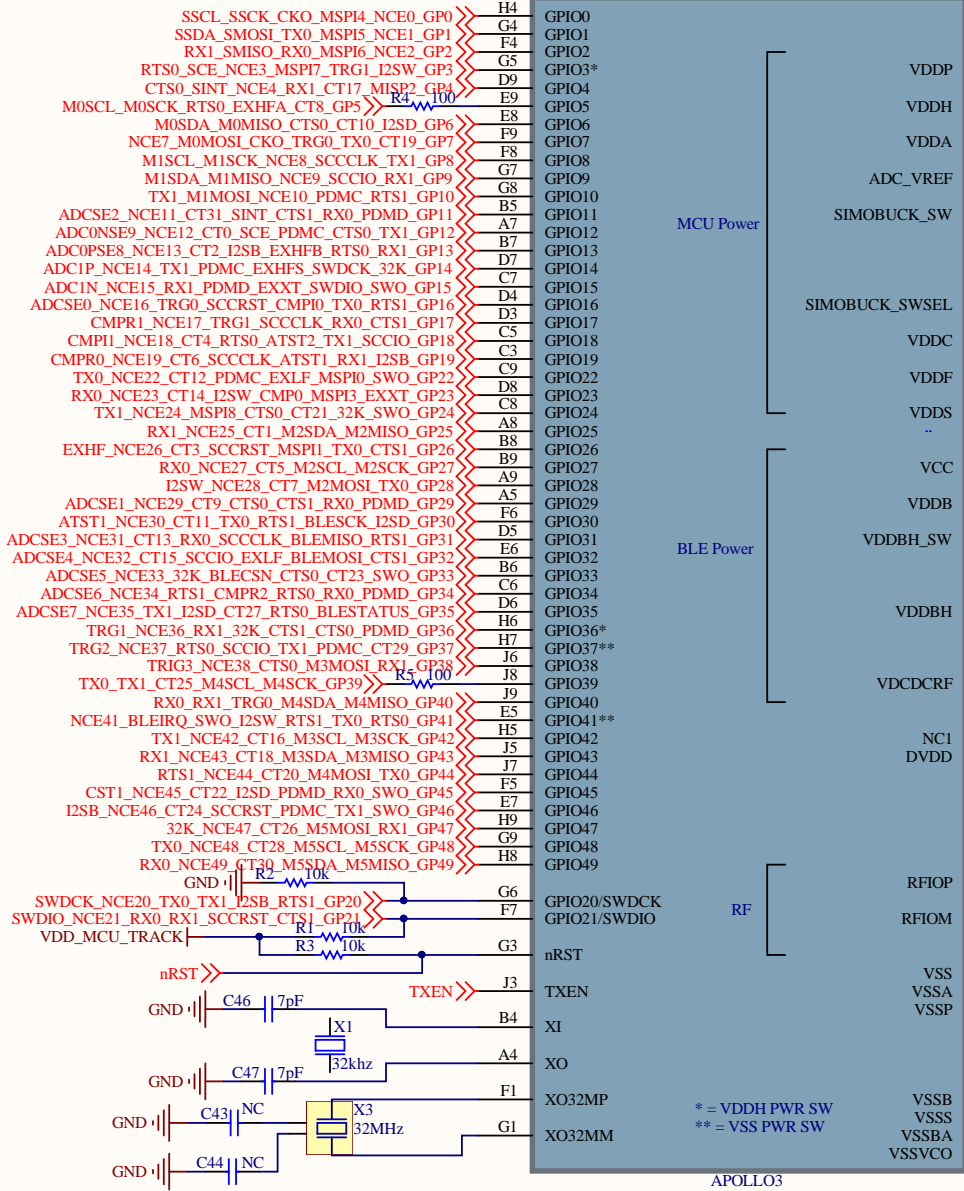
-- Pin3 of P18 connected to net "TXEN"
-- Renamed pin H3 of U1 from "NC" to "DVDD"

REV 1.6.0 ("REV. G")

-- Update antenna matching network R27,R28,R30,C39,C40,C41,C42

FID1 PCB-FIDUCIAL FID2 PCB-FIDUCIAL FID3 PCB-FIDUCIAL

| | | | | |
|---|-------------------|--|--|--|
| Title APOLLO3 AMA3B1KK-KBR EVB | | Ambiq Micro 6500 River Place Blvd Building 7, Suite 200 Austin, TX 78730 USA | | Cannot open file Y:\ambiq\re positories |
| Size: A4 | Number: | Revision:1.6 | | |
| Date: 5/30/2018 | Time: 10:32:51 AM | Sheet 1 of 9 | | |
| File: E:\Ambiq\AMA3B1KK-KBR EVB\cover-page.SchDoc | | | | |

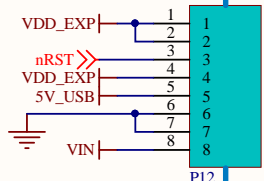
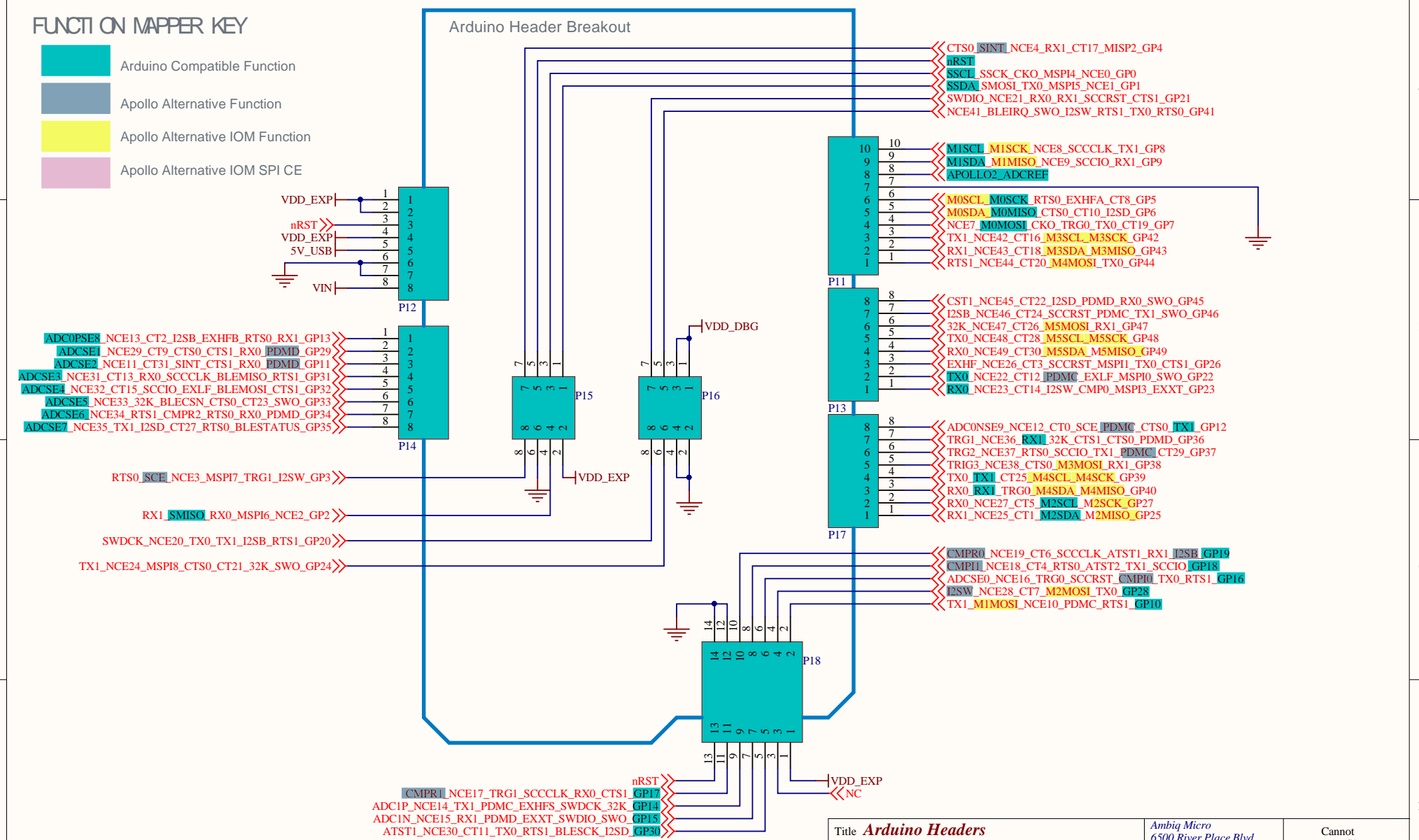


| | | | | |
|--|-------------------|---------------|--|---|
| Title Apollo3 BGA | | | Ambiq Micro 6500 River Place Blvd Building 7, Suite 200 Austin, TX 78730 USA | Cannot open file Y:\ambiq\repositories |
| Size: A4 | Number: | Revision: 1.6 | | |
| Date: 5/30/2018 | Time: 10:32:51 AM | Sheet 2 of 9 | | |
| File: E:\Ambiq\AMA3B1KK-KBR EVB\apollo3-bga.SchDoc | | | | |

FUNCTION MAPPER KEY

- Arduino Compatible Function
- Apollo Alternative Function
- Apollo Alternative IOM Function
- Apollo Alternative IOM SPI CE

Arduino Header Breakout

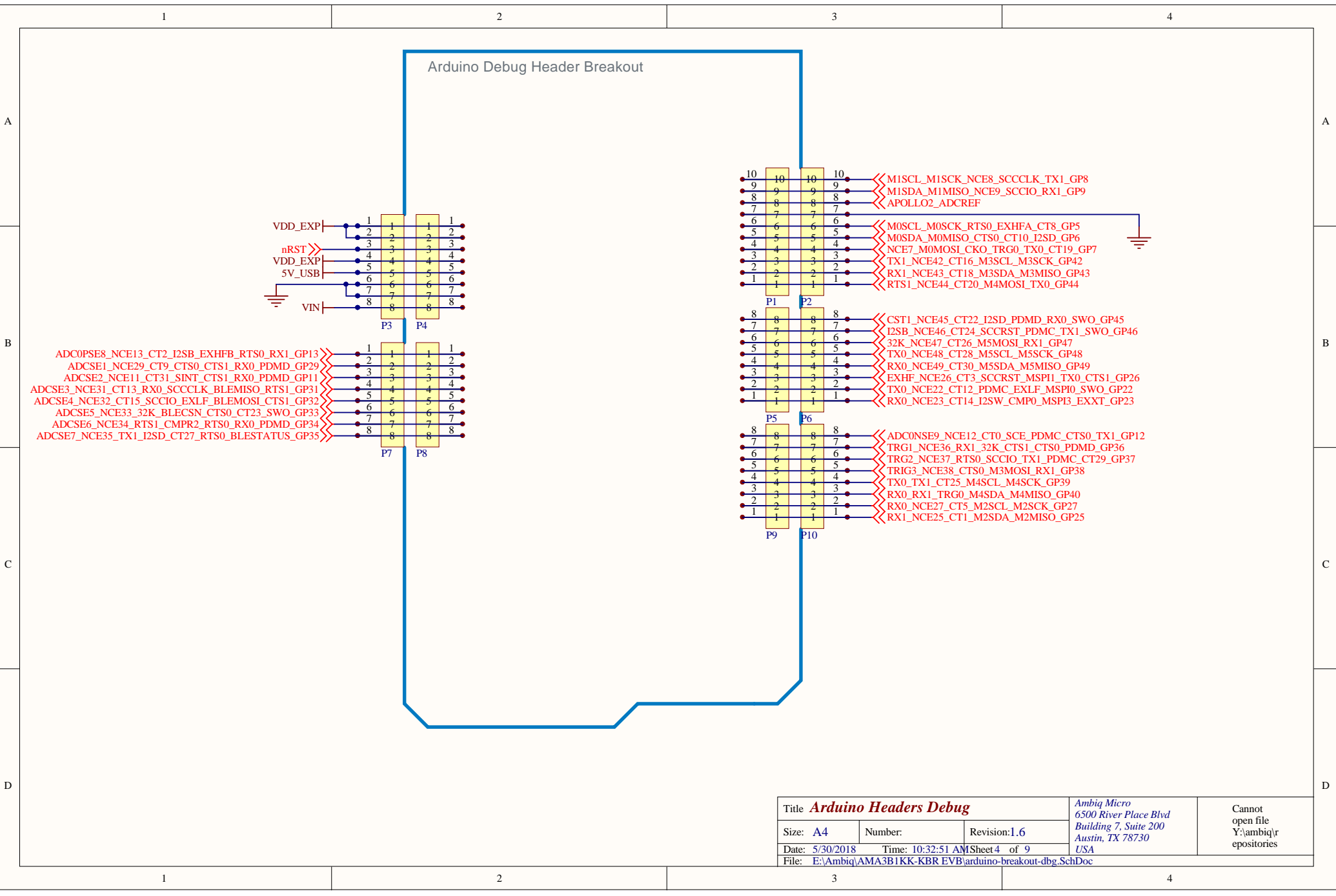


- Header P14 connections:
- 1: ADC0PSE8_NCE13_CT2_I2SB_EXHFB_RTS0_RX1_GP13
 - 2: ADCSE1_NCE29_CT9_CTS0_CTS1_RX0_PDMD_GP29
 - 3: ADCSE2_NCE11_CT31_SINT_CTS1_RX0_PDMD_GP11
 - 4: ADCSE3_NCE31_CT13_RX0_SCCCLK_BLEMISO_RTS1_GP31
 - 5: ADCSE4_NCE32_CT15_SCCIO_EXLF_BLEMOSI_CTS1_GP32
 - 6: ADCSE5_NCE33_32K_BLECSN_CTS0_CT23_SWO_GP33
 - 7: ADCSE6_NCE34_RTS1_CMPR2_RTS0_RX0_PDMD_GP34
 - 8: ADCSE7_NCE35_TX1_I2SD_CT27_RTS0_BLESTATUS_GP35

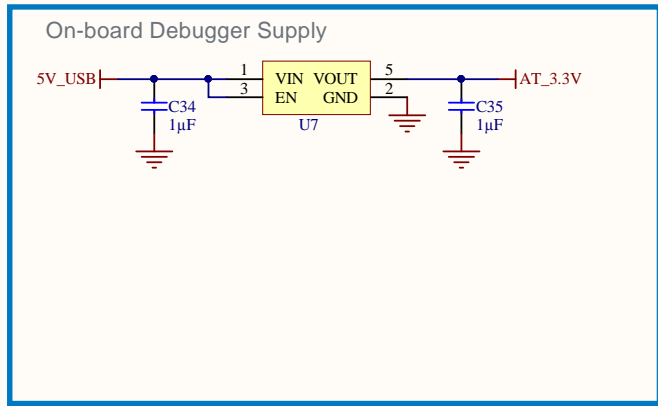
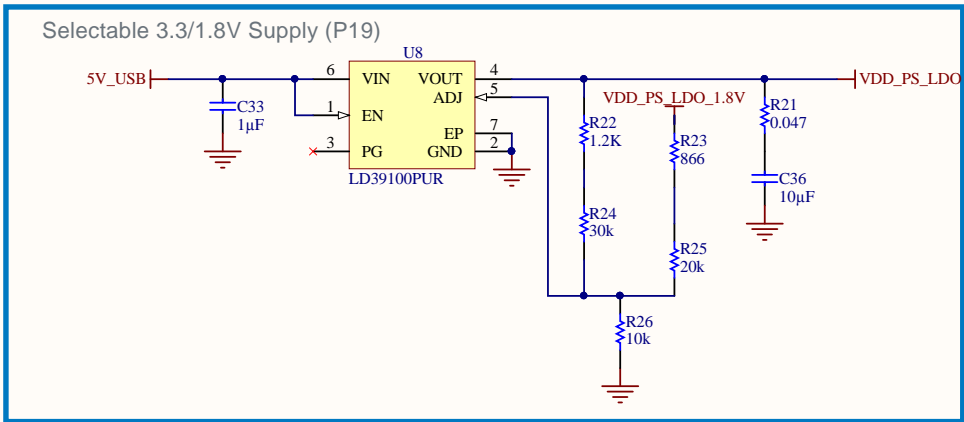
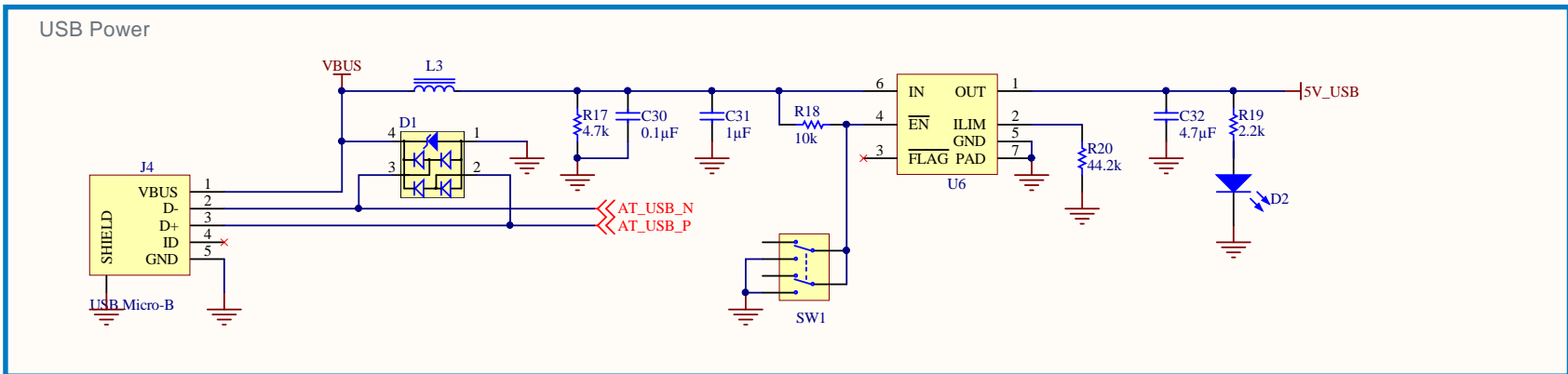
- Header P15 connections:
- RTS0_SCE_NCE3_MSPI7_TRG1_I2SW_GP3
 - RX1_SMISO_RX0_MSPI6_NCE2_GP2
 - SWDCK_NCE20_TX0_TX1_I2SB_RTS1_GP20
 - TX1_NCE24_MSPI8_CTS0_CT21_32K_SWO_GP24

- Header P18 connections:
- 1: nRST
 - 2: VDD_EXP
 - 3: NC
 - 4: VDD_EXP
 - 5: VDD_EXP
 - 6: VDD_EXP
 - 7: VDD_EXP
 - 8: VDD_EXP
 - 9: VDD_EXP
 - 10: VDD_EXP
 - 11: VDD_EXP
 - 12: VDD_EXP
 - 13: VDD_EXP
 - 14: VDD_EXP

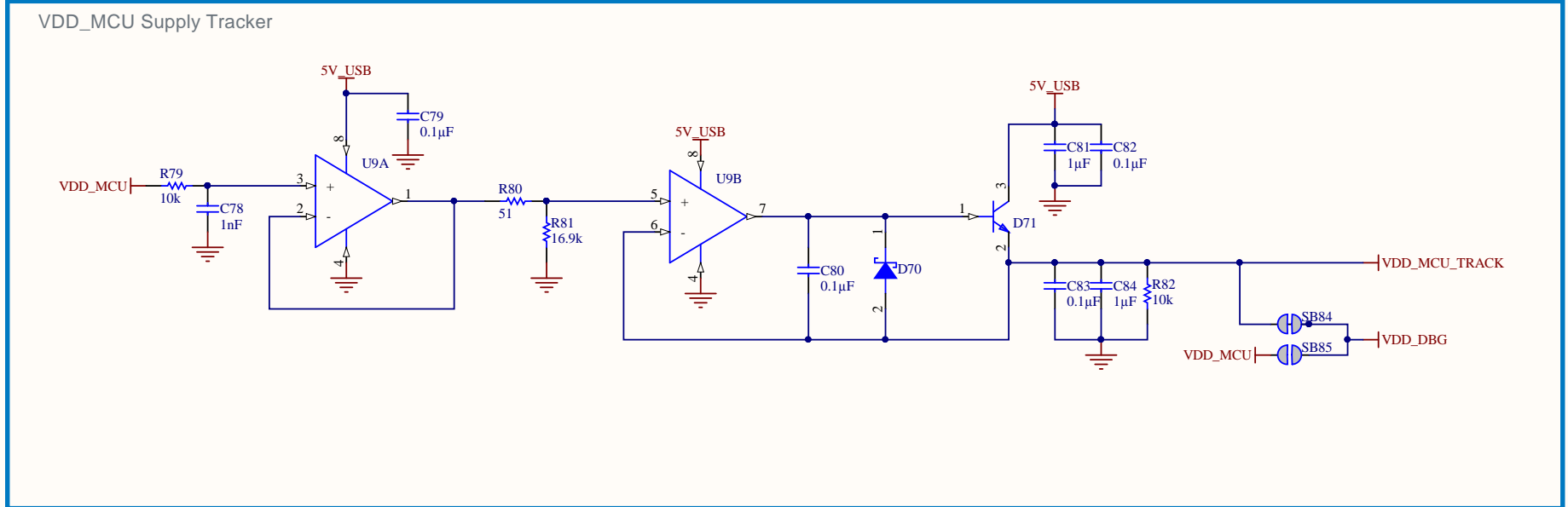
| | | | | |
|---|-------------------|---------------|--|---|
| Title Arduino Headers | | | Ambiq Micro 6500 River Place Blvd Building 7, Suite 200 Austin, TX 78730 USA | Cannot open file Y:\ambiq\repositories |
| Size: A4 | Number: | Revision: 1.6 | | |
| Date: 5/30/2018 | Time: 10:32:51 AM | Sheet 3 of 9 | | |
| File: E:\Ambiq\AMA3B1KK-KBR EVB\arduino-breakout.SchDoc | | | | |



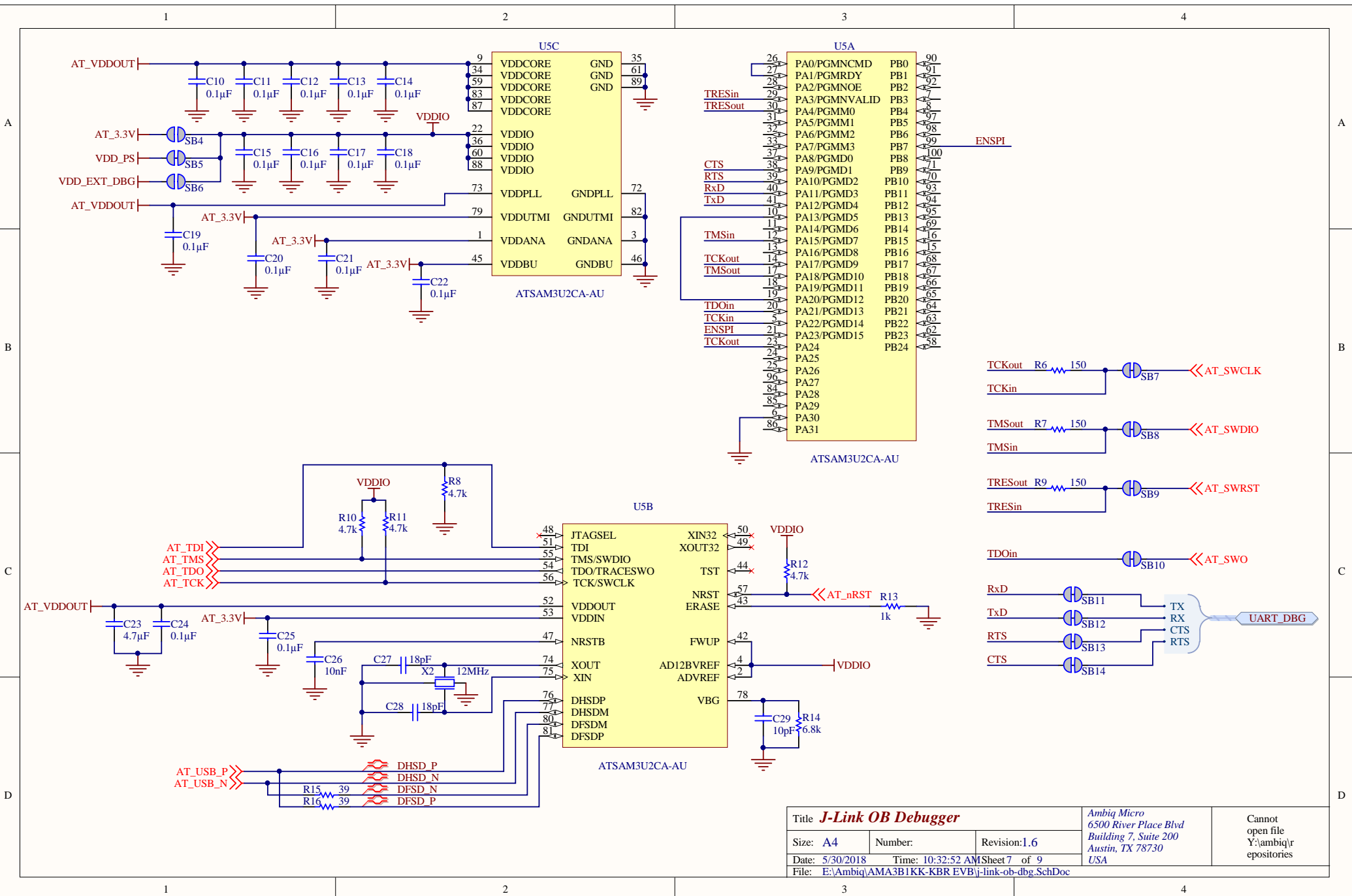
| | | | | |
|---|-------------------|---------------|--|---|
| Title Arduino Headers Debug | | | Ambiq Micro 6500 River Place Blvd Building 7, Suite 200 Austin, TX 78730 USA | Cannot open file Y:\ambiq\repositories |
| Date: 5/30/2018 | Time: 10:32:51 AM | Revision: 1.6 | | |
| File: E:\Ambiq\AMA3B1KK-KBR EVB\arduino-breakout-dbg.SchDoc | | | Sheet 4 of 9 | |



| | | | | |
|---|-------------------|---------------|--|--|
| Title Power Supplies | | | Ambiq Micro 6500 River Place Blvd Building 7, Suite 200 Austin, TX 78730 USA | Cannot open file Y:\ambiq\r epositories |
| Size: A4 | Number: | Revision: 1.6 | | |
| Date: 5/30/2018 | Time: 10:32:51 AM | Sheet 5 of 9 | | |
| File: E:\Ambiq\AMA3B1KK-KBR EVB\power-supplies.SchDoc | | | | |

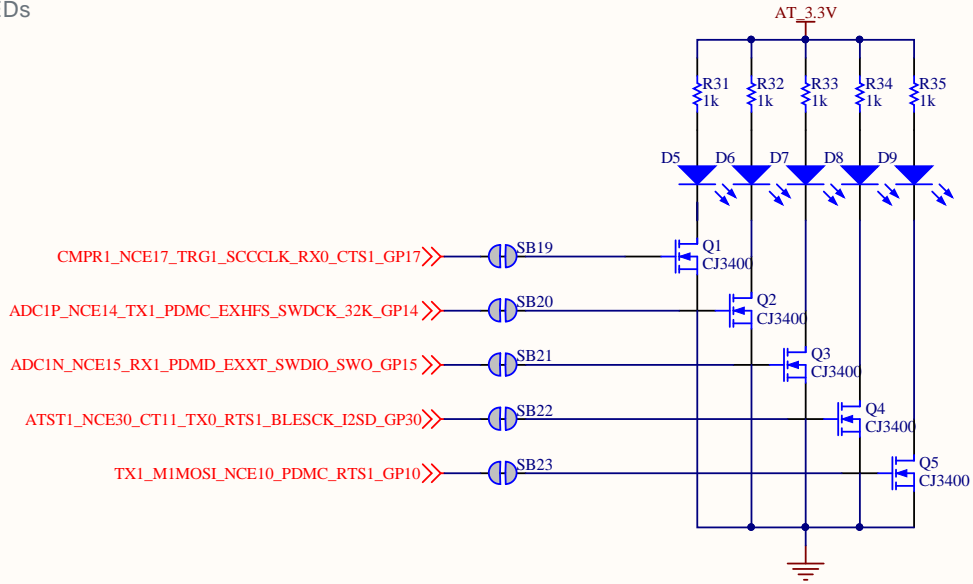


| | | | | |
|---|-------------------|--------------|--|--|
| Title Power Supply Tracker | | | Ambiq Micro 6500 River Place Blvd Building 7, Suite 200 Austin, TX 78730 USA | Cannot open file Y:\ambiq\r epositories |
| Size: A4 | Number: | Revision:1.6 | | |
| Date: 5/30/2018 | Time: 10:32:51 AM | Sheet 6 of 9 | | |
| File: E:\Ambiq\AMA3B1KK-KBR EVB\power-supply-tracker.SchDoc | | | | |

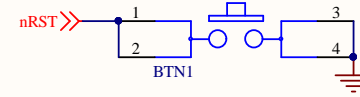


| | | | | |
|--|-------------------|---------------|--|---|
| Title J-Link OB Debugger | | | Ambiq Micro 6500 River Place Blvd Building 7, Suite 200 Austin, TX 78730 USA | Cannot open file Y:\ambiq\repositories |
| Size: A4 | Number: | Revision: 1.6 | | |
| Date: 5/30/2018 | Time: 10:32:52 AM | Sheet 7 of 9 | | |
| File: E:\Ambiq\AMA3B1KK-KBR EVB\j-link-ob-dbg.SchDoc | | | | |

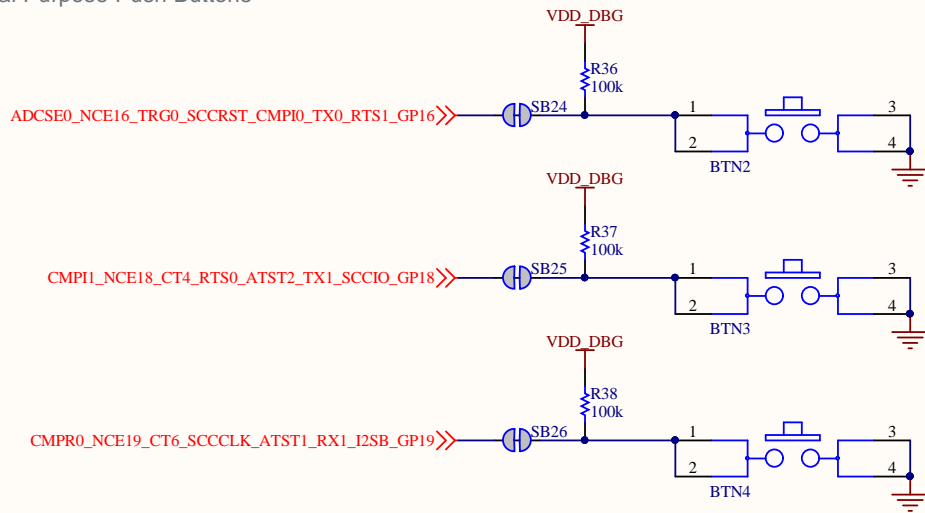
LEDs



System Reset Button

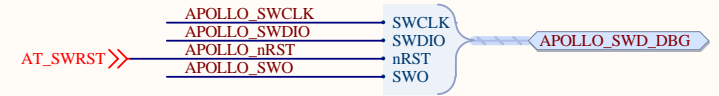
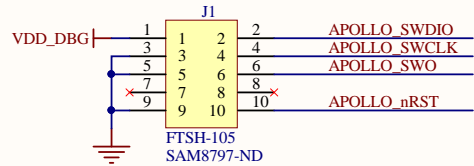


General Purpose Push Buttons

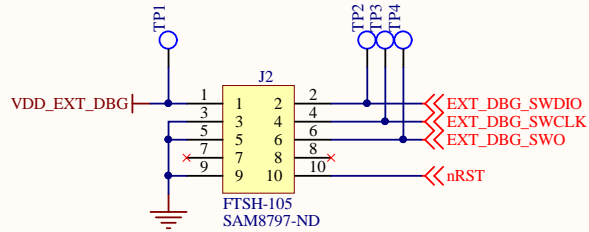


| | | | | |
|---|-------------------|--------------|--|--|
| Title User Interface | | | Ambiq Micro 6500 River Place Blvd Building 7, Suite 200 Austin, TX 78730 USA | Cannot open file Y:\ambiq\r epositories |
| Size: A4 | Number: | Revision:1.6 | | |
| Date: 5/30/2018 | Time: 10:32:52 AM | | Sheet 8 of 9 | |
| File: E:\Ambiq\AMA3B1KK-KBR EVB\user-interface.SchDoc | | | | |

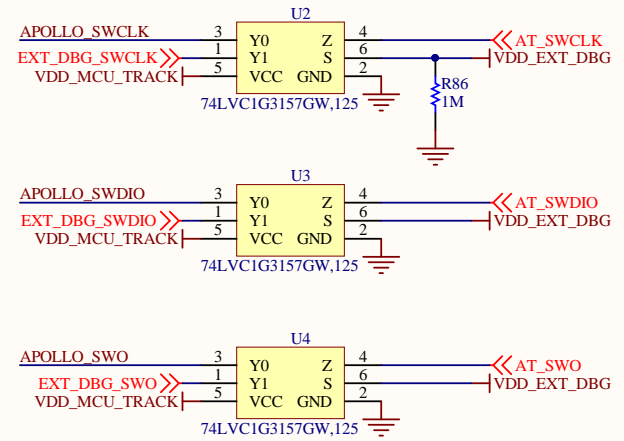
External Debug In



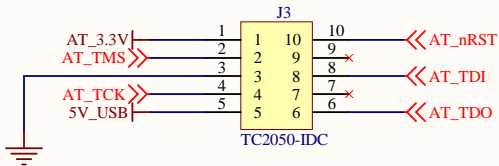
External Debug Out



External Debug Out Switch



J-Link OB Programmer



| | | | | |
|---|-------------------|---------------|--|--|
| Title Debug Headers & Support | | | Ambiq Micro 6500 River Place Blvd Building 7, Suite 200 Austin, TX 78730 USA | Cannot open file Y:\ambiq\re positories |
| Size: A4 | Number: | Revision: 1.6 | | |
| Date: 5/30/2018 | Time: 10:32:52 AM | Sheet 9 of 9 | | |
| File: E:\Ambiq\AMA3B1KK-KBR EVB\dbg-connectors.SchDoc | | | | |